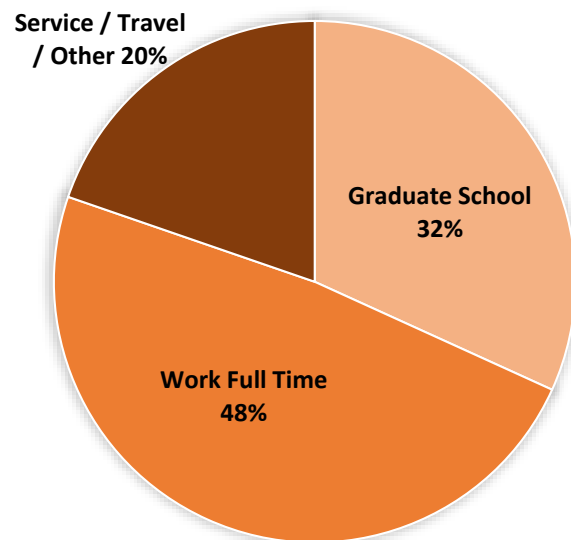


## Undergraduate Engineering Stats

(as of Spring 2024)

	BE/BME	EE	ESE	ME
# Concentrators	118	40	34	94
% SB (vs. AB)	44%	78%	59%	91%

## Where have our recent graduates gone?



A few examples of where recent alumni are currently:



## You're invited to learn more!

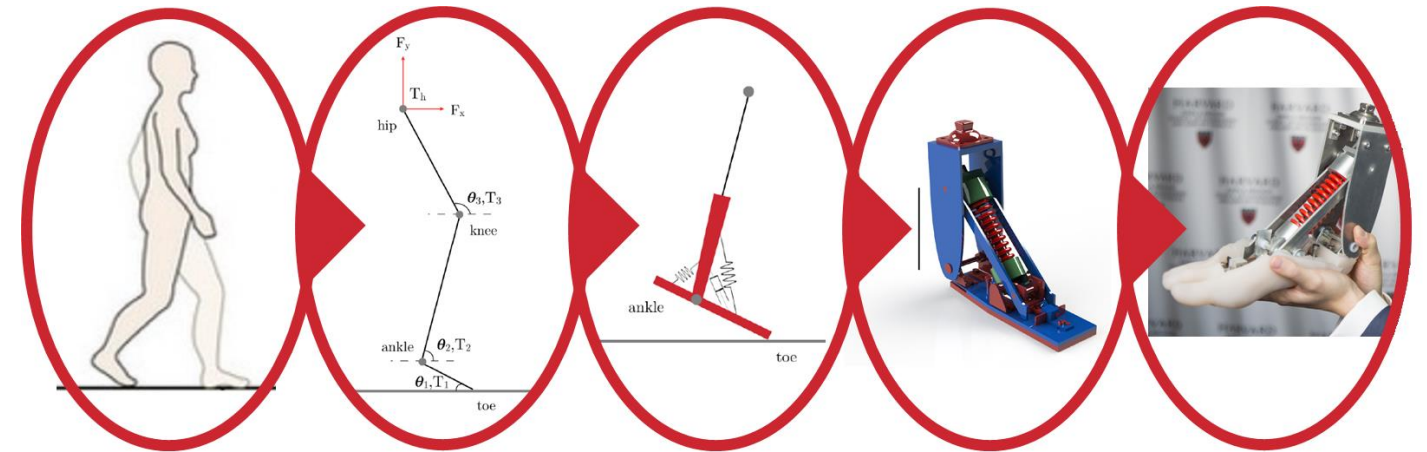
Talk to our engineering advisors:

 <p><b>Bioengineering/ Biomedical Engineering:</b>  <b>Linsey Moyer</b> lmoyer@seas.harvard.edu</p>	 <p><b>Electrical Engineering:</b>  <b>Chris Lombardo</b> lombardo@seas.harvard.edu</p>	 <p><b>Environmental Science &amp; Engineering:</b>  <b>Bryan Yoon</b> byoon@seas.harvard.edu</p>	 <p><b>Mechanical Engineering:</b>  <b>Seymur Hasanov</b> shasanov@seas.harvard.edu</p>
--	--	--	--

Learn more on the web: [www.seas.harvard.edu](http://www.seas.harvard.edu)

# Engineering @ SEAS

Engineers **solve** real-world problems by applying math and science for **analysis** and **design**.

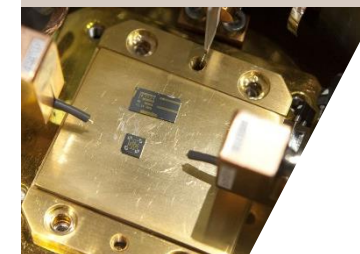
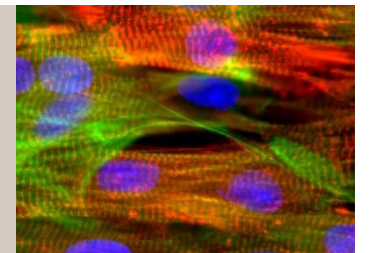


Images courtesy of Alex Yang, BE SB '17

## Bioengineering

At the intersection of life and physical sciences biomedical engineers apply principles of engineering to understand and model living systems and design novel therapies to improve human health.

Degrees offered: Engineering Sciences SB (Bioengineering track); Biomedical Engineering AB



## Electrical Engineering

Covers a range of research areas from devices to systems, offering ample research opportunities, both theoretical and experimental, at the forefront of the field and its interdisciplinary applications.

Degrees offered: Electrical Engineering SB; Engineering Sciences AB (Electrical and Computer Engineering Track)

## Environmental Science and Engineering

To understand, predict, and respond to natural and human-induced environmental change, environmental scientists and engineers provide technical solutions and advance innovations in environmental measurements, modeling, and control.

Degrees offered: Engineering Sciences SB (Environmental Science and Engineering track); Environmental Science and Engineering AB



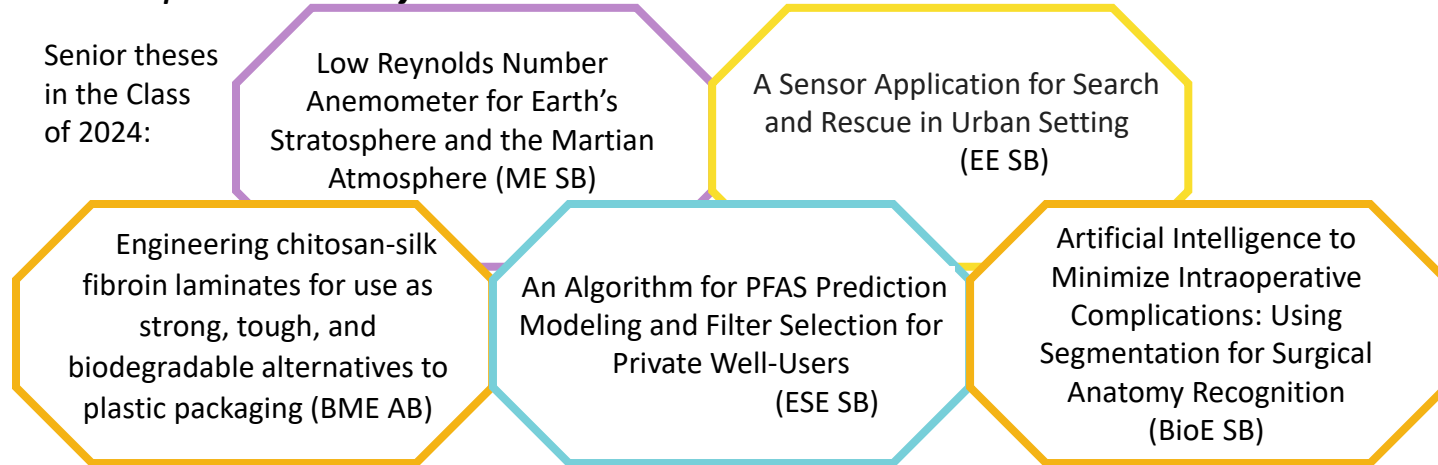
## Mechanical Engineering

Mechanical engineering uses the principles of physics and materials science for the analysis and design of mechanical and thermal systems.

Degrees offered: Mechanical Engineering SB; Engineering Sciences AB (Mechanical and Materials Science and Engineering Track)

## What problem do **you** want to solve?

Senior theses in the Class of 2024:



## Frequently asked questions

- **What's the difference between Bachelor of Arts (A.B.) and Bachelor of Science (S.B.)?**
  - AB: 14-16 courses, more flexible requirements, can do research thesis, can do joint/double concentration
  - SB: 20 courses, engineering design courses, including individual capstone design project in ES100 (this is a required thesis), ABET-accredited (for professional licensure)
- **How can I get involved in research?**
  - Term-time: SEAS labs welcome undergraduates to work on research projects during the term
    - Can do research for credit by taking ES 91r
    - Can find a SEAS lab by attending the SEAS Research Labs event in Nov. and/or March.
  - During summer: Students regularly join SEAS labs with funding through PRISE, HCRP, HUCE
    - Many students participate in research at other universities through NSF REU programs
- **What kinds of internships can I do?**
  - Research internships are available through SEAS and national labs. See above.
  - Industry internships are available and can be found by attending SEAS career fairs or talking to the SEAS Experiential Learning Director, Keith Karasek (kkarasek@seas.harvard.edu)
- **Where do I start?**
  - Start taking math (according to placement) and science in your first year
  - Talk to a concentration advisor (ADUS) in any of our fields to chat about your options
  - Take one of our introductory courses (see below)
  - Join a SEAS club (HUES, EWB, HURC, etc...)

## Gateway Courses

Designed for first-years and sophomores



**Electrical**  
ES 50 (Spr)

**Mechanical**  
ES 51 (Fall, Spr)



**Environmental**  
ESE 6 (Fall)

**Bio/biomedical**  
ES 53 (Fall)



## Common course sequences for the first two years

General Guidelines	Fall	Spring
First Year	Foundational Math Science or Gateway Engineering	Foundational Math Science or Gateway Engineering
Sophomore	Foundational Math (if needed) Science Engineering	Foundational Math (if needed) Science Engineering

### Tips for all students:

- **First year:** At least two courses toward the concentration should be taken each term
- **Sophomore year:** Generally, three courses toward the concentration should be taken each term
- Foundational math, physics, science, and gateway courses generally count toward any of the engineering concentrations
  - Students have the flexibility to switch between programs through sophomore year
- **Foundational Math:** Students should start math in the fall of their first year according to their placement (i.e., start at Math Ma, 1a, 1b, or 21a) and continue each semester until completion of the 21a/b series, which is required of all students. SB students starting in Math 1b and beyond will need to take additional advanced math courses beyond foundational math.
- **Physics:** Students should complete the physics series by spring of sophomore year. Typical sequences are:
  - Spring first year (PS 12a or Physics 15a) then fall sophomore year (PS 12b or Physics 15b)
  - Fall first or second year (Physics 15a or AP 50a) then spring first or second year (Physics 15b or AP 50b)
- **Life Science/Chemistry/other Science:** Students should take the appropriate course relevant to their discipline (see chart below).

### Bio/biomedical engineering

	Fall	Spring
First Year	Foundational Math LS 1a/LPS A	Foundational Math Physics (LS 1b)
Sophomore	ES 53 Found. Math (if needed) Physics	Found. Math (if needed) Physics (if needed) Engineering course

### Tips for Bio/BME students:

- Most Bio/BME students take ES 53 in sophomore fall, though some take the course in fall of first year.
- Physics is a co-req for ES 53. It is highly recommended to start physics in the first year.
- While not strictly required for the SB program, many premed SB students take LS 1b (beyond concentration requirements), but it need not be taken in the first year.

### Environmental science and engineering

	Fall	Spring
First Year	Foundational Math ESE 6 Consider: AM 10/CS 50	Foundational Math PS 11 PS 12a
Sophomore	Found. Math (if needed) PS 12b Engineering course	Found. Math (if needed) Physics Engineering course

### Tips for ESE students:

- Take ESE 6 in your first semester if your math placement is 1B or higher.
- PS 11 is required for both AB and SB students.

### Electrical engineering

	Fall	Spring
First Year	Foundational Math Physics or CS 50	Foundational Math Physics or CS32 ES 50
Sophomore	Found. Math (if needed) Physics (if needed) ES 155 or ES 152	Found. Math (if needed) CS 32 (if needed) ES 156

### Tips for EE students:

- First-year students who place out of Math 1b can take ES 155 in their first fall semester
- First-year students should strongly consider ES 50 in spring
- Strongly recommended to start physics in first year to be able to take ES 152 (co-req Physics b) in sophomore year

### Mechanical engineering

	Fall	Spring
First Year	Foundational Math AM 10, or CS 50	Foundational Math ES 51 or ES 50 Physics
Sophomore	Found. Math (if needed) Physics CS 50 (if needed)	Found. Math (if needed) Physics (if needed) ES 50 (if needed) ES 120

### Tips for MechE students:

- MechE students should complete ES 51 by sophomore fall
- Almost all MechE students take ES 120 in sophomore spring